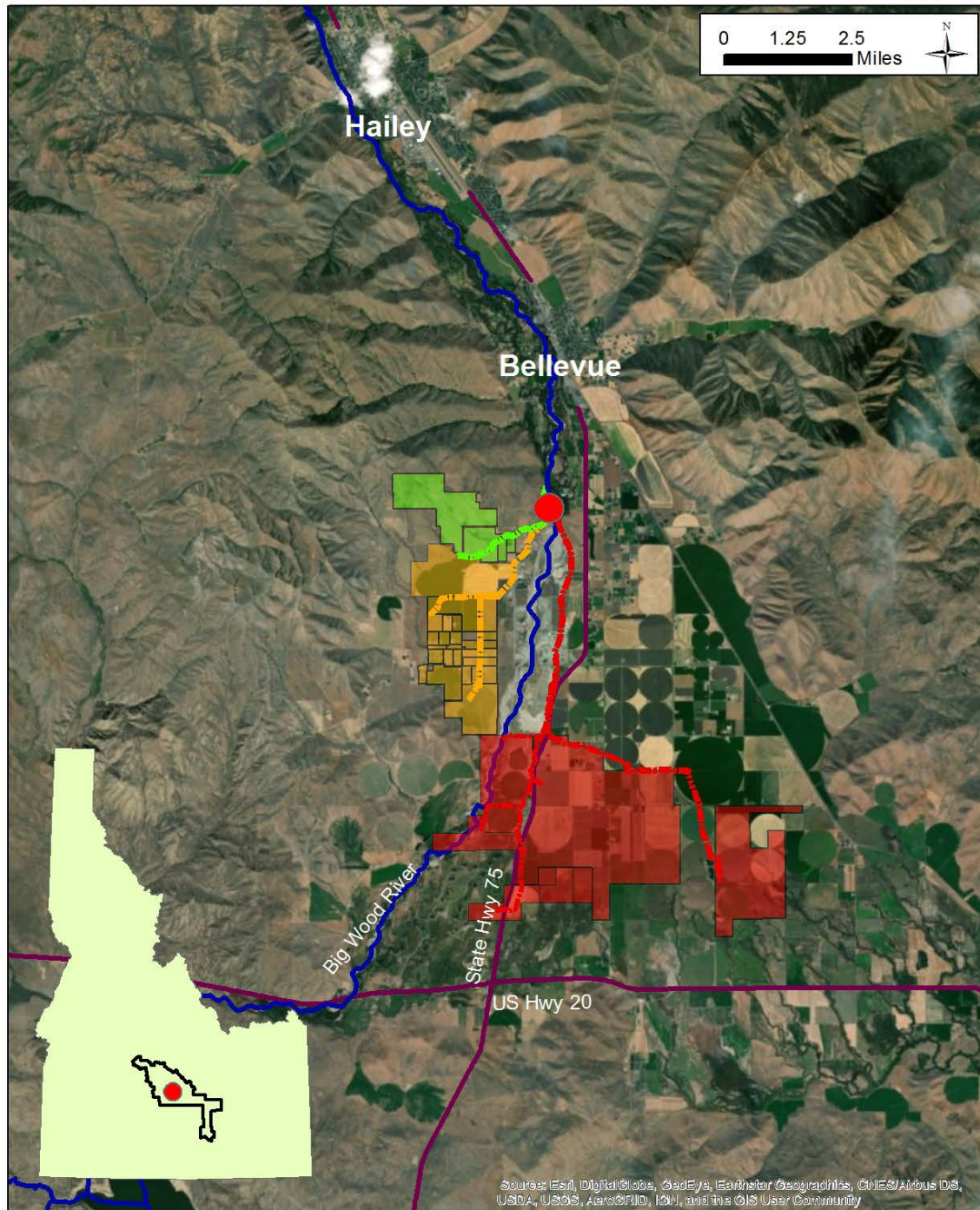


An aerial photograph of a river system. A large, light-colored sandbar or gravel bar dominates the center-left of the frame, partially blocking the river's flow. The river continues to the right, where it appears to be in a more defined channel. The surrounding landscape is a mix of bare, brown trees and shrubs, suggesting a late autumn or winter setting. In the upper right, a small cluster of buildings, possibly a farm or a small village, is visible. The overall scene depicts a natural waterway undergoing a flood mitigation project.

Glendale Flood Mitigation Project

Keri York, Trout Unlimited

Brian Dilworth, Flood Control District No. 9



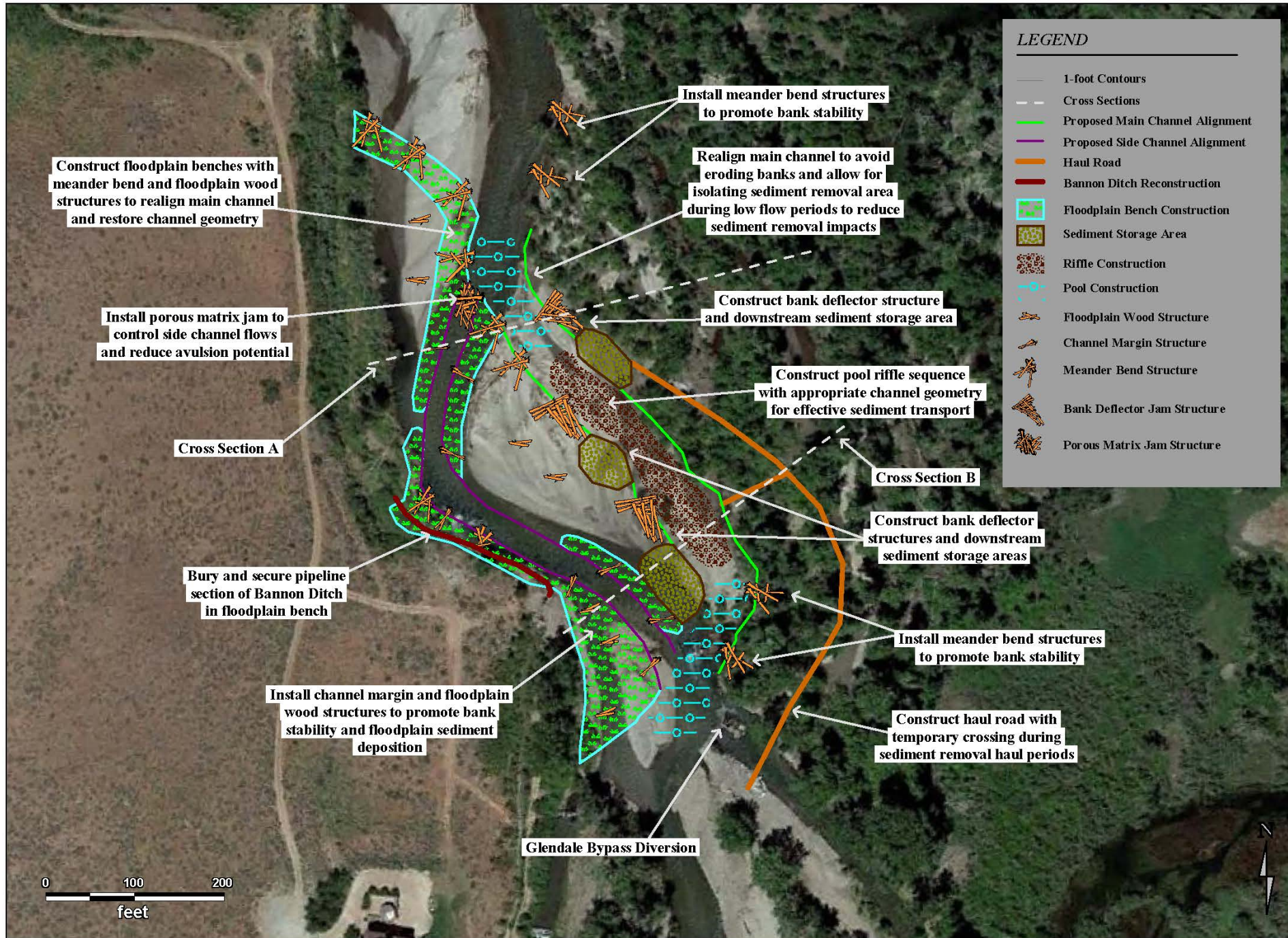
Three Irrigation Diversions: 6,300 acres

- Bypass Canal
- Glendale Canal
- Bannon Ditch

Project Partners

- Upper Wood River Water Users Assoc.
- Bannon Ditch
- Glendale Canal
- Baseline Bypass Canal
- Flood Control Dist. No. 9
- Trout Unlimited





PO Box 8578, 140 E Broadway, Suite 23, Jackson, WY 83302

FINAL SITE PLAN
Big Wood River Restoration Project,
Glendale Bypass Area,
Blaine County, Idaho

Date: 8/27/2018
 Description: Design Drawings
 Scale 1 inch = 100 feet
 July 2017 Imagery

Drawing:

SHEET 6



Create deflector structures and sediment storage areas

Reactivate eastern channel

Create riffles and pools

Create floodplain benches

Stabilize Bannon ditch pipe

Construct porous matrix jam











